

Fixed Rate Offers

What are Fixed Rate Offers and how does it work?

Fixed rate offers are a key way by which interested landholders can enter a funded in-perpetuity conservation agreement. A map (shown overleaf) shows the parts of NSW that Phase 1 of the fixed rate offers apply to. If you live in the coloured area and think you have important native plants and animals on parts of your property you may wish to participate.

You can visit the BCT website to view regional maps to see if you are in an eligible area www.bct.nsw.gov.au or you can call the BCT on 1300 992 668.

Fixed rate offers work by selecting land which ranks highest in having priority landscapes and conservation assets on the land. Sites that provide the most value for money are offered conservation management payments at a fixed rate (\$/hectare/year).

How do I know if I'm eligible?

To be eligible for a fixed rate offer, the part of your land that you wish to have considered for conservation needs to:

1. be in the area of the fixed rate offer program shown on the map on this factsheet (you can access more detailed regional maps on the BCT website: www.bct.nsw.gov.au); and
2. have a minimum size of 50 hectares proposed to be conserved and managed for biodiversity; and
3. contain threatened species, habitat for threatened species, or threatened ecological communities (you do not need to know if you have these types of plants and animals to submit an EOI for a site assessment; the BCT will determine if you have these plants and animals during the site assessment); and
4. have a site that is in moderate to good ecological condition (this will also be determined by the BCT during the site assessment).

How do I participate?

You can apply to participate by sending a completed Expression of Interest form to the BCT or calling the BCT on 1300 992 688. The form can be found on the BCT website www.bct.nsw.gov.au. Expressing an interest in the program does not create a binding obligation to proceed with participating in an agreement.

For sites that are eligible and ranked highest in priority landscapes, BCT field staff and ecologists will work with the landholder to identify the environmental values on the site, identify the potential conservation area and identify agreed conservation management actions.

Phase 1 of the program has a budget allocation of \$2 million. This will mean that site visits will be limited to the highest-ranking sites.

How do I receive a fixed payment offer?

Following a site assessment, the BCT will further evaluate the site. Landholders that own sites with best value for money will be made an offer of payments at a fixed rate (\$/hectare/year) to enter into an in-perpetuity conservation agreement and to undertake agreed conservation management actions. Fixed rate offers will be made until the available funds in Phase 1 have been allocated.

If you choose to accept the fixed rate offer, the BCT will develop a management plan and conservation agreement based on the discussions during the site assessment. Landholders will be required to enter into a conservation agreement. Annual payments for the life of the agreement will commence after the agreement is registered on the title of the land.

This program provides a unique opportunity for successful landholders to secure an additional revenue stream to conserve and manage native vegetation and biodiversity on their land.

Where are BCT fixed rate offers available?

Phase 1 of the Fixed Rate Offers will focus on the highest priority NSW landscapes within subregions that are the least protected within NSW. These areas are shown on the map below.

The BCT is targeting threatened species, habitat for threatened species, and threatened ecological communities. You do not need to know if you have these types

Fixed Rate Offers

of plants and animals. If you are eligible for a site visit, the BCT will assess if you have these plants and animals on your land.

There are priority landscapes and subregions that are not included in Phase 1.

To understand more read the Fixed Rate Offer Guide – Phase 1 on the BCT website: www.bct.nsw.gov.au.

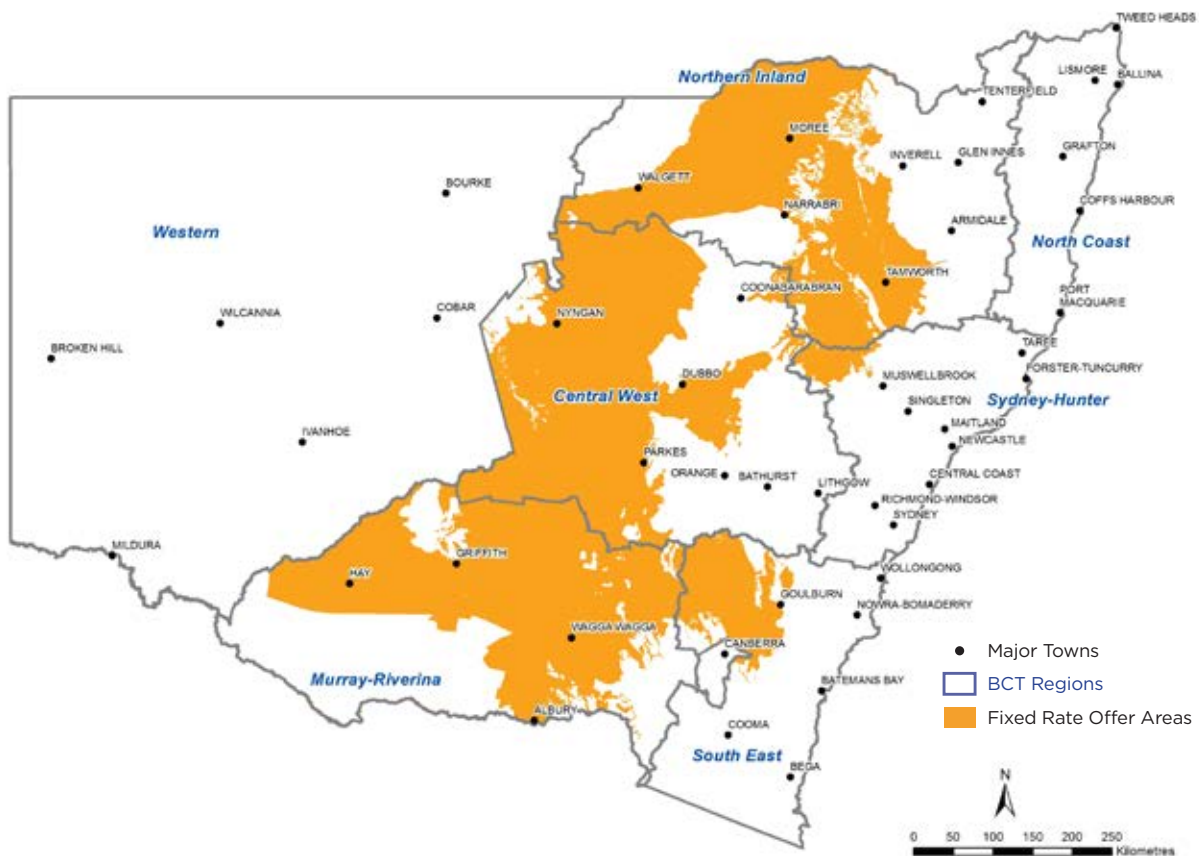
Where can I get more information?

Visit the BCT website:
www.bct.nsw.org.au.

Download the Landholder Guide to Fixed Rate Offers – Phase 1 and the Fixed Rate Offer - Schedule of Prices which shows the fixed rate on offer for Local Government

Areas that are in the Fixed Rate Offer Area for Phase 1.

Call us on **1300 992 688**.



www.bct.nsw.gov.au

email: info@bct.nsw.gov.au

phone: 1300 992 688

NSWBCT BCT_NSW



**Biodiversity
Conservation
Trust**

