



MONARO LANDSCAPE CONNECTIVITY

What is Monaro Landscape Connectivity?

Monaro Landscape Connectivity aims to improve the condition, extent and connectivity of patches of native vegetation across the Monaro region, in the Murrumbidgee catchment area. Interested land managers can also be involved in the application of Indigenous land management practices on their property and participate in digital PlaceStories™.

The project is funded from the Australian Government Caring for our Country program, and is being delivered through a partnership between the Murrumbidgee Catchment Management Authority (CMA), Kosciuszko to Coast (K2C), and Murrumbidgee Landcare Incorporated (MLi).

What is available to land managers?

The Monaro Landscape Connectivity project aims to work with land managers to actively manage patches of native vegetation. Participating land managers can receive a management plan, or enter into an agreement with the Murrumbidgee CMA to receive incentive funding to assist them in managing native vegetation on their property. The following activities will be considered for funding:

- Fencing to manage stock access;
- Strategic planting of native trees and shrubs; and
- Controlling exotic plants

The Monaro Landscape Connectivity project will also assist interested land managers to apply Indigenous land management practices and participate in a short digital film using PlaceStories™.

Ongoing support and advice for participating land managers will be available through the Murrumbidgee CMA, K2C and MLI.



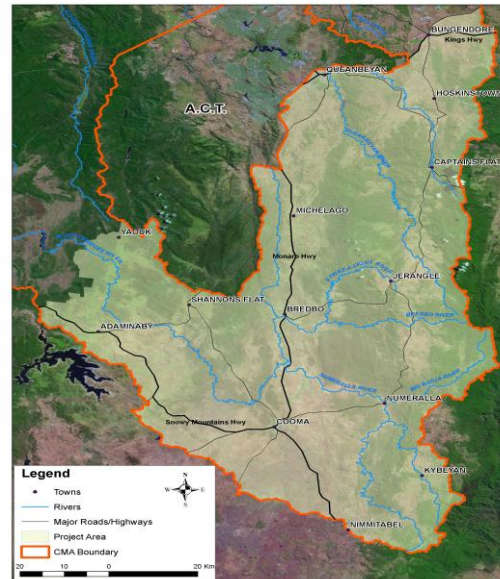
Native grassland and woodland of the Monaro region (Rainer Rehwinkel).

Identifying native vegetation:

Native vegetation can be woody (dominated by trees and/or shrubs) or non-woody (grassland), which is characterised by native tussock grasses and forbs with few or no shrubs.

All woody and grassland native vegetation will be considered in the Monaro Landscape Connectivity project, however priority will be given to vegetation communities that are endangered such as white box, yellow box and blakely's red gum grassy woodland (known as box gum grassy woodland and natural temperate grassland).

If you are unsure of the type of native vegetation on your property, contact the project team to discuss.



Project area

Who is eligible to participate in the Monaro Landscape Connectivity project?

All land managers (public or private land) across the Monaro region within the Murrumbidgee catchment are eligible to participate. The following criteria however, are to be met to receive incentive funding:

- a. The nominated patch of native vegetation is greater than 10 hectares in area (or 5 hectares for grassland vegetation);
- b. The nominated patch of native vegetation is located within the project area (see map); and
- c. The nominated patch of native vegetation is not currently or has not previously received funding for its management from another project.

Preference will be given to patches of native vegetation that are connected (within 1 kilometre) of another area of native vegetation (woody or grassland). This connectivity is important as it allows native species to move between areas of habitat for foraging and breeding.

How can I get involved?

If you have any questions about project eligibility or would like to express your interest in becoming involved, contact: Felicity Collins, Murrumbidgee CMA
T: (02) 6452 4150 / E: felicity.collins@cma.nsw.gov.au