



Biological Control of weeds

An introduction of biological control methods used

Location: Queanbeyan

Date: Thursday 20th October 2016

Cost: \$335

This course provides land managers and natural resource officers who are involved in the control of weeds with the skills to

- Assess suitability of biological control for a particular weed infestation
- Selecting a suitable site to establish a nursery
- Sourcing and acquiring a desired bioagent
- Transporting and storing biological cultures
- Maintaining and monitoring your biological control site
- Bioagent harvest and release
- Recording and reporting on the status of your project
- Evaluating effectiveness and spread of your bioagent

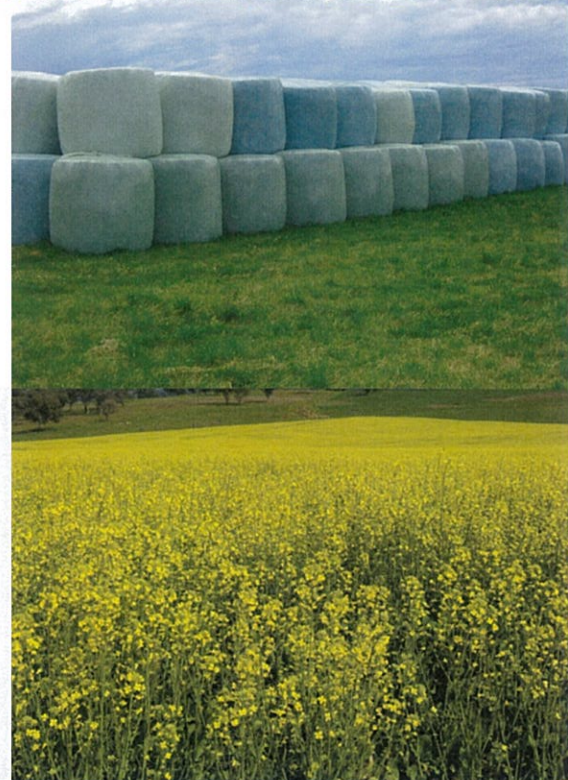
Contact: Michelle Houghton

Phone: 0269512501

Email: michelle.houghton@dpi.nsw.gov.au

PROfarm is the training program delivered by NSW Department of Primary Industries (NSW DPI) to meet the needs of farmers, primary industries, agribusiness and the community.

Courses are delivered locally by skilled and experienced DPI staff. Many courses are available online or a combination of online and face-to-face.



Any questions about these or other PROfarm products?

For enquiries & registrations call:



PATERSON ▶ HUNTER VALLEY
1800 025 520

CENTRAL TABLELANDS / GREATER SYDNEY /
SOUTH EAST REGIONS **02 4640 6333**

TAMWORTH ▶ NORTHERN NSW
02 6763 1276

TRANGIE ▶ WESTERN NSW
02 6880 8023

YANCO ▶ SOUTHERN NSW
1800 628 422

DUBBO ▶ CENTRAL NSW
02 6881 1290

For an up-to-date schedule of courses see www.profarm.com.au